

## Extra Large Soil Profile



The extra large 20 cm soil profile only causes a low pressure by the mounting system on the flat roof. Thus the large effective supporting surface cares for uniform load distribution and maximum security for the roof membrane and insulation.

# Safe, Decentralized Inverter Installation



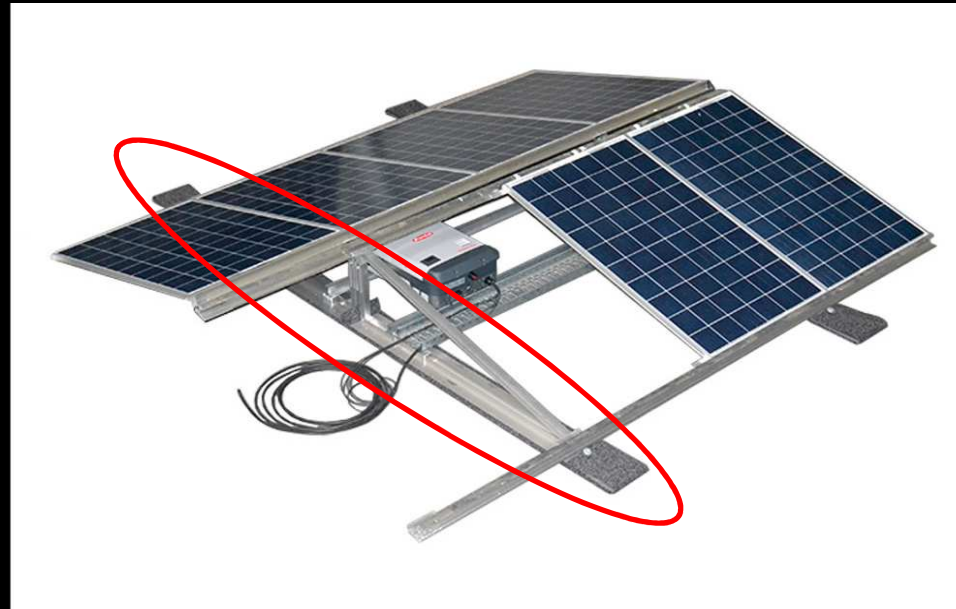
The SOL-50 flat roof mounting system DUO FLEX offers the option of decentralized inverter installation in the system. Thus the inverter is secured against weather conditions but nevertheless aerated. Thanks to the decentralized inverter concept only short cables are necessary. The inverter will be quickly and safely installed on an inverter bracket which guarantees accessibility.

## Cable Routing in the System



The SOL-50 DUOFLEX console have a special possibility to carry the cable routing. Thus DC and AC conduct lay safely against weather conditions.

# Continuous Building Protection Mat



The continuous Protection Mat embeds the soil profile 100 %. Metal parts do not touch the roof membrane. Thus damages on the roof area are excluded as far as possible.

# Easy Potential Equalization



As the mounting system represents a group it has to be earthed only on ONE place of the mounting system. The consoles do not have to be earthed amongst each other only the single module fields.

## The SOL-50 Cage Concept



A cage for more security. With the SOL-50 mounting system the module has no carrying role. The mounting system carries itself and thus keeps away the loads from the solar module. There the triangle consoles and the horizontal profiles exclusively form the group.

## Safe Mounting of the Modules



The Photovoltaic Modules are carried stressless in the mounting system as they are laying floatingly in the frame.



## Quick and Easy Installation



Due to the fact that the modules are easily inserted and the triangle consoles are pre-assembled SOL-50 is quickly installed.



## Flexible thanks to Single Consoles



Especially with uneven roofs the single consoles are adapted perfectly to the soil. Rain water can flow away between the interruptions.

# Certificates



TÜV Rheinland, Deutsches Institut für Bautechnik, CE Zeichen, Windkanaltests der RWTH Aachen, VDE, 10 Jahre Herstellergarantie usw.

Die Verwendung bauartzugelassener Aluminium- und Edelstahlwerkstoffe sorgt für nahezu unbegrenzte Lebensdauer auch bei hohen UV-Einstrahlungen und für eine hohe Akzeptanz bei prüfstatischen Gutachten.